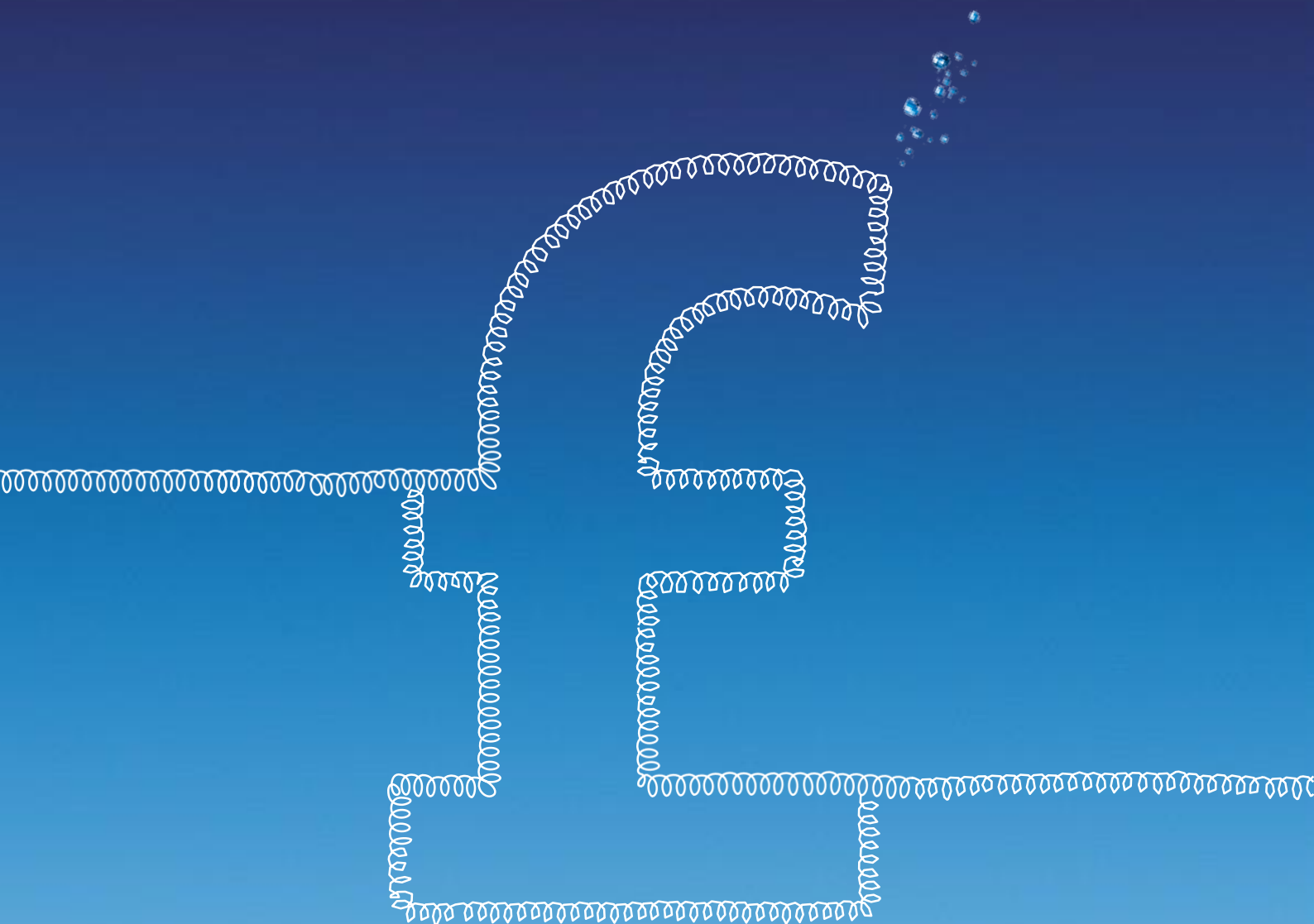


# Enterprise landline price list

## April 2016



# Contents

This document contains links to help you move around quickly and easily. Just hover over the text and you'll see them.

Landline .....	3
ISDN2 .....	5
ISDN30 .....	7
Common pricing .....	9
UK major calls .....	11
UK minor calls .....	12
UK directory enquiry calls .....	21
International calls from the UK.....	27
UK texts.....	43

## O<sub>2</sub> Landline

Single Landline (Single Line one number) Rental	Price
	£11.50 per line
Multi Landline (2+ lines one number) Rental	Price
	£11.50 per line

One Off Charges	Price
Landline transfer to O2 (per line)	£FOC
New Landline Provision	Single Landline £75 Multiline £75
Conversion from ISDN2 to landline	£70.00
Short duration Line	£200 (additional provision charge)

Cancellation Charges	Price
Cancelling a landline transfer order	£4.00
Cancelling a new landline order prior to 4pm on the day before the provision date	£4.00
Cancelling a new landline order after 4pm on the day before the provision date	£67.00
Cancelling a conversion prior to 4pm on the day before the conversion date	£3.50
Cancelling a conversion from LLU line after 4pm on the day before the provision date	£34.86
Cancelling a conversion from ISDN2 after 4pm on the day before the provision date	£70.00

Bolt-ons	Price
<b>Pre-provisioned features</b>	
1471 and call return	1471 is free of Charge, and return calls are charged at the call rate
Reminder Call	6p to use the service
Ring Back	6p to use the service, and subsequent calls are charged at the call rate
Three Way Calling	6p to use the service, plus both calls are charged at the call rate
Withhold number 141	Free of charge
<b>Optional features</b>	
Caller Display	£1 per month
Selective Call Barring (O2 Controlled)	£0.50 per month
Call Diversion (Customer Controlled)	£0.50 per month
Call Minder – 1571	£0.94 per month
Call Minder – Custom	£2.34 per month
Call Minder – Premium	£3.74 per month
Call Sign	£0.50 per month
Call Waiting	£0.50 per month
Smart Divert	£3.50 setup then £0.50 per month

Numbering	Price
Change of Number (within local exchange number range)	£15.00 Setup

## O<sub>2</sub> Landline continued

Bolt Ons	Price
<b>Additional optional features</b>	
Anonymous call reject	£75 setup (multi-line only) then 50p per month
Bar use of 1470 release number	Free of charge
Bar use of 141 withhold number	Free of charge
Bar use of call return (1471)	Free of charge
Call barring (customer controlled)	50p per month
Call barring + bypass number (customer controlled)	£1 per month
Call barring - Indirect Access (customer controlled)	40p per month per line
Bypass Number	50p per month
Call diversion (O <sub>2</sub> controlled)	£3.50 setup
Change of divert number	£3.50
Remote call forwarding O <sub>2</sub> controlled	£20 setup then £6 per month
Called party answer	£1 per month
Choose to refuse	£1 per month
Direct connect	£2 per month
Permanent call barring (O <sub>2</sub> controlled)	£3.50 setup (per line)
Presentation number	£20 setup then £1 per month
Reminder call	50p per month
Ring back	50p per month
Ring back inhibit	Free of charge
Smart divert + bypass number	£3.50 setup then £1 per month
Three-way calling	50p per month

Caller redirect Bolt Ons	Price
Monthly caller redirect	£3.50 per month
Quarterly caller redirect	£2 per month

Service package upgrade	Price
Upgrade to level 2	£1.50 per line
Upgrade to level 3	£4 per month per line
Upgrade to level 4	£5 per month per line

### 1.1 Availability

O<sub>2</sub> Landline is available in the UK, with the exception of Isle of Man and Hull (Kingston).

### 1.2 Restrictions or incompatibility

Landline is not available on Featureline, out-of-area, in-contract, light-user, analogue DDI, and BT payphone lines. It is also not available on lines with Redcare.

# ISDN2

Line rental	Price (minimum of two channels)
ISDN2	£11 per channel per month
Itemised billing	Free of charge

One-off charges	Price
ISDN2 transfer to O <sub>2</sub> (per installation)	£36
New ISDN2 provision (per line)	£232.98
Conversion from landline to ISDN2	£202.74
Short duration line	£75 (additional provision charge)

Cancellation charges	Price
Cancelling a ISDN2 transfer order (anytime)	£15
Cancelling a new ISDN2 order prior to 4pm on the day before the provision date	£15
Cancelling a new ISDN2 order after 4pm on the day before the provision date	£232.98
Cancelling a conversion prior to 4pm on the day before the provision date	£15
Cancelling a conversion after 4pm on the day before the provision date	£202.74

Numbering	
Change of number (within local exchange number range)	£15
Reconfiguration of MSN when number changes are requested, per occasion per msn group (excludes number changes to installations where ddi or snddi is involved)	£15

MSN numbering (ISDN2e standard only)	Price <sup>1</sup>
2-10 Number MSN	£15 setup then 50p per month per MSN

DDI numbering (ISDN2e system only)	Price <sup>2</sup>
DDI Planning	£100
DDI Setup and Rental	£1 setup then 17p per month per DDI

Call routing	Price <sup>3</sup>
T-Reference call hunting	£1 per month

Standard Bolt Ons	Price
Call forwarding (customer controlled)	£1 per month
Call forwarding (O <sub>2</sub> controlled)	£1 per month
Calling Line Identity Presentation (CLIP)	£1 per month
Calling Line Identity Restriction (CLIR)	£1 per month
Call deflection	£1 per month
Call waiting and call hold	£1 per month
Permanent call barring (O <sub>2</sub> controlled)	£1 per month
Presentation number	£50 setup then £1 per month
Selective call barring (O <sub>2</sub> controlled)	£1 per month
Sub-addressing - 20 octet	£1 per month

<sup>1</sup> MSN setup does not apply for transfer from BT or another WLR provider. It would only apply from a cable provider (e.g. Virgin Media) or a LLU (e.g. TalkTalk) where the number range is not currently on the BT network.

<sup>2</sup> DDI planning and connection does not apply for transfer from BT or another WLR provider. It would only apply from a cable provider (e.g. Virgin Media) or a LLU (e.g. TalkTalk) where the number range is not currently on the BT network.

## ISDN2 continued

Additional Bolt Ons	Price
<b>Additional features</b>	
Anonymous call reject	£100 setup then £1 per month
Digits to switch	Free of charge
Connected Line Identity Presentation (COLP)	£1 per month
Connected Line Identity Restriction (COLR)	£1 per month
Terminal portability (standard access only)	Free of charge

Caller redirect Bolt Ons	Price
Monthly caller redirect (single number)	£3.50 per month
Quarterly caller redirect (single number)	£2 per month
Caller redirect (consecutive DDI range)	£200 setup then £2 month per 10

Admin features	Price
Busy Out Lines (BOL)	Free of charge during fault repair
Temporary call diversion	Free of charge during fault repair
Caller redirect (consecutive DDI range)	£150 setup then £2 month per 10 numbers

Service package	Price
Upgrade to level 3	£4 per month per line
Upgrade to level 4	£5 per month per line

### 1.3 Availability

ISDN2 is available in the UK, with the exception of Isle of Man and Hull (Kingston).

### 1.4 Restrictions or incompatibility

ISDN2 is not available on FeatureNet, out-of-area, in-contract, light-user, analogue DDI, BT basic and BT payphone lines. It is also not available on SMDS products, VPN FeatureNet services and private circuits.

# ISDN30

Line rental	Price
ISDN30	£14 per channel (minimum eight channels) per month
Itemised billing	Free of charge

Line provision	Price
Line transfer (per bearer)	£100
New line provision (per installation)	£900 plus £10 per channel
Conversion from ISDN30 DASS to ISDN30e	£15 per channel up to and including 60 channels: £800 for more than 60 channels
Short duration Line	£440 (additional provision charge)

Cancellation charges	Price
Cancelling a new ISDN30: 1 day or less before provision date	90% of new line provision charge
Cancelling a new ISDN30: 2-4 days before provision date	75% of new line provision charge
Cancelling a new ISDN30: 5-6 days before provision date	60% of new line provision charge
Cancelling a new ISDN30: 7-14 days before provision date	30% of new line provision charge
Cancelling a new ISDN30: 15 or more days before provision date	0% of new line provision charge

DDI numbering	Price
DDI planning	£100
DDI setup and rental	£1 setup then 17p per month per DDI

Reconfiguration	Price
Reconfiguring an installation to change the attributes of the channels (e.g. changing to incoming or outgoing only, diverse or alternative routing, digits to switch)	£70 for 0 to 15 channels
	£140 for 16 to 30 channels
	£210 for 31 to 60 channels
	£280 for more than 60 channels

Standby power	Price
Batteries for optical fibre NTE (1 x 2) and (4 x 2)	£100 setup
Batteries for optical fibre NTE (16 x 2) and SDH	£200 setup
Standalone batteries for all types of NTE	£550 setup then £40 per month

Business continuity	Price
Site Assurance option 1: route all calls to a prearranged number	£2 per month per channel
Site Assurance option 2: Out-of-area, diverse routing, DDI dual parenting - DDI	Dependent on specific customer requirements

## ISDN30 continued

Bolt Ons	Price
<b>Optional features which are applicable per billing number</b>	
Call forwarding (O <sub>2</sub> controlled)	£3 per month
Call deflection	£3 per month
Calling Line Identity Presentation	£3 per month
Calling Line Identity Restriction (CLIR)	£3 per month
Permanent call barring (O <sub>2</sub> controlled)	£3 per month
Presentation number 1	£20 setup then £1 per month
Presentation number 3, 4, 5	£20 setup then £1 per month
Selective call barring (O <sub>2</sub> controlled)	£3 per month
Sub-addressing - 6 octet	£3 per month
Sub-addressing - 20 octet	£3 per month

Bolt Ons	Price
<b>Additional features which are applicable per billing number</b>	
Anonymous call reject	£75 setup then £3 per month
Call barring (customer controlled)	£3 per month
Call barring - indirect access (O <sub>2</sub> controlled)	£3 per month
Call diversion (O <sub>2</sub> controlled)	£3 per month
Call diversion (customer controlled)	£3 per month
Call forwarding (customer controlled)	£3 per month
Channel busy (customer controlled)	£3 per month
Connected Line Identity Presentation (COLP)	£3 per month
Connected Line Identity Restriction (COLR)	£3 per month

Bolt Ons	Price
<b>Caller redirect Bolt Ons</b>	
Monthly caller redirect (single number)	£3.50 per month
Quarterly caller redirect (single number)	£2 per month
Caller redirect (consecutive DDI range)	£150 setup then £2 per month

Service package	Price
Upgrade to level 3	£4 per month per channel
Upgrade to level 4	£5 per month per channel

Admin features	Price
Temporary call diversion	Free of charge during fault repair

Business continuity	Price
Site Assurance option 1	£2 per channel per month
Site Assurance option 2	Subject to requirements

**1.5 Availability**

ISDN30 is available in the UK, with the exception of Isle of Man and Hull (Kingston).

**1.6 Restrictions or incompatibility**

ISDN30 is not available on FeatureNet, out-of-area, in-contract, light-user, analogue DDI, BT basic and BT payphone lines. It is also not available on SMDS products, VPN FeatureNet services and private circuits.



# Common pricing

Expedited repair charges	Price
Landline - expedite from level 2 to level 3	£600
Landline - expedite from level 2 to level 4	£750
Landline - expedite from level 3 to level 4	£200
ISDN2 - expedite from level 2 to level 3	£600
ISDN2 - expedite from level 2 to level 4	£750
ISDN2 - expedite from level 3 to level 4	£200
ISDN30 - expedite from level 3 to level 4	£1200

Visit charges	Price
Visit or abortive charge - applies where an engineer is required onsite to provide a product or service, but the charge for the visit is not included in the price of the product or service	£85

Time-related charges	Price
Repair - per call out plus one hour time-related charge	<p>£150 per visit during normal working day</p> <p>£180 per visit at all other times except Sunday and Public/Bank holidays</p> <p>£220 per visit during Sunday and Public/Bank holidays</p>
Repair - per hour thereafter	<p>£85 per hour during normal working day</p> <p>£130 per hour at all other times except Sunday and Public/Bank holidays</p> <p>£150 per hour during Sunday and Public/Bank holidays</p>
Provision and rearrangement visit to lines to install or rearrange network or CPE - per call out	<p>£85 per visit during normal working day</p> <p>£110 per visit at all other times except Sunday and Public/Bank holidays</p> <p>£130 per visit during Sunday and Public/Bank holidays</p>

Time related charges	Price
Provision and rearrangement visit to lines to install or rearrange network or CPE - per hour	<p>£50 per hour during normal working day, minimum 1 hour</p> <p>£185 per hour during all other times except Sunday and Public/Bank holidays, minimum 3 hours</p> <p>£100 per hour during Sunday and Public/Bank holidays, minimum 3 hours</p>
Provision and rearrangement - supplementary charge for carry-out work outside normal working hours, where work in normal working hours is included in the price - per call out	<p>£40 per visit at all other times except Sunday and Public/Bank holidays</p> <p>£80 per visit during Sunday and Public/Bank holidays</p>
Provision and rearrangement - supplementary charge for carry-out work outside normal working hours, where work in normal working hours is included in the price - per hour	<p>£35 per hour at all other times except Sunday and Public/Bank holidays, minimum 3 hours</p> <p>£80 per hour during Sunday and Public/Bank holidays, minimum three hours</p>

Standard store items	Price
Internal pack	£10
External pack	£20
Data extension pack	£10
Broadband front plate	£10
Broadband micro filter	£7.50
NTE	£20
Block Terminal 92A	£2.50

Standard store items rental /month	Price
Line Isolation - connection	£100
Line Isolation Unit 3B, 3C, 3D	£20
Line Isolation Unit 8A (Connection withdrawn from new supply)	£20
Line Isolation Unit 9A (Connection withdrawn from new supply)	£25
Line Isolation Unit 10B	£20
Line Isolation Unit 12A/B	£20

## Common pricing continued

Excess construction charges	Price
Survey fee/planning charge (previously included in other charges) this item will only be charged if excess construction charges are accepted by a customer. It will be included as an item within the excess charges calculation and each resurvey additional to the first survey will increment the cost by a further £350.	£350
Breaking/drilling through each external wall	£330
Breaking/drilling through each internal concrete wall	£200
Breaking/drilling through each internal non-concrete wall	£60
Provision of a new footway box (surface area up to 0.5 sqm) - customers are advised that the smallest footway box necessary to provide service will be charged for	£750
Provision of a new medium size footway box (surface area between 0.5 sqm and 1 sqm)	£1650
Provision of a new large size footway box (surface area greater than 1 sqm)	£2850
Provision of a new small carriageway box (surface area up to 1 sqm) - customers are advised that the smallest carriageway box necessary to provide service will be charged for	£3150
Provision of a new medium size carriageway box (surface area between 1 sqm and 1.25 sqm)	£3850
Provision of a new large size carriageway box (surface area greater than 1.25 sqm)	£4400
Cable (fibre or copper) including any jointing required	£7.50
Copper cable supplied for the customer to lay to agreed entry and termination points. (Minimum 20m supply) this charge includes onsite termination and jointing work by Openreach to connect and terminate the cable. If the order is for less than 40 metres then a visit charge will apply - please see visit charges for details.	£4

Excess construction charges Directly	Price
buried cable (including any cable and wayleave costs)	£30
Moleploughing cable or fibre in subduct (includes any cable and wayleave costs)	£25
Blown fibre	£4
Blown fibre tubing in duct	£3.50
Internal cabling (including internal blown fibre tubing)	£8
New ductwork - soft surface (includes wayleave costs)	£35
New ductwork - footway (includes wayleave costs)	£80
New ductwork - carriageway (includes wayleave costs)	£140
Trunking and traywork within end user's curtilage	£40

Internal shift charges	Price
Visit charge	£85
Per line shifted	£49
Standalone shift of network termination point (applicable to LLU)	£95.55
LLU MPF first line shifted	£134
LLU MPF subsequent lines shifted	£49

External shift charges	Price
Shift or reposition external overhead wires to same building (up to a maximum of 90 minutes work on multiple shifts. Additional work will be charged as time-related charges).	£134

## UK major calls (Single Analogue Line)

BTW CDR content	Daytime Mon - Fri 7am - 7pm	Evening and night-time Mon - Fri before 7am after 7pm	Weekend all day Sat and Sun
O2 RRP pence per minute			
Local geographic	3.00	3.00	3.00
National geographic	3.00	3.00	3.00
Mobile telephone - fm1 (O2)	6.00	6.00	6.00
Mobile telephone - fm3 (T-Mobile)	8.00	8.00	8.00
Mobile telephone - fm4 (Orange)	8.00	8.00	8.00
Mobile telephone - fm5 (Vodafone)	8.00	8.00	8.00
Mobile telephone - fm6 (3 Mobile)	13.00	13.00	13.00
Local non-geographic (see note 2)	5.00 (Access Charge) + Service Charge	5.00 (Access Charge only) + Service Charge	5.00 (Access Charge only) + Service Charge
National non-geographic (see note 2)	5.00 (Access Charge only) + Service Charge	5.00 (Access Charge only) + Service Charge	5.00 (Access Charge only) + Service Charge

### Note 1

Billing for standard calls is per second rounded up to the next 1p.

Call connection charge: 2p (for all calls not included in call minute bundles).

### Note 2

Calls to Local & National non-geographic numbers will also attract a Service Charge set by the Service Provider managing the number dialed.

## (Multiline & ISDN))

BTW CDR content	Daytime Mon - Fri 7am - 7pm	Evening and night-time Mon - Fri before 7am after 7pm	Weekend all day Sat and Sun
O2 RRP pence per minute			
Local geographic	0.95	0.95	0.95
National geographic	0.95	0.95	0.95
Mobile telephone - fm1 (O2)	4	4	4
Mobile telephone - fm3 (T-Mobile)	6	6	6
Mobile telephone - fm4 (Orange)	6	6	6
Mobile telephone - fm5 (Vodafone)	6	6	6
Mobile telephone - fm6 (3 Mobile)	6	6	6
Local non-geographic (see note 2)	5.00 (Access Charge) + Service Charge	5.00 (Access Charge) + Service Charge	5.00 (Access Charge) + Service Charge
National non-geographic (see note 2)	5.00 (Access Charge) + Service Charge	5.00 (Access Charge) + Service Charge	5.00 (Access Charge) + Service Charge

**Note 1**

Billing for standard calls is per second rounded down to the nearest tenth of a penny. If the cost of a call is less than 0.1p, we will round down to zero pence.

**Note 2**

Calls to Local & National non-geographic numbers will also attract a Service Charge set by the Service Provider managing the number dialed.

**General note**

Where prices appear in the minimum charge columns as well as the pence per minute columns, then both apply for the call duration.

# UK minor calls

Call type	Calls charged by time duration			
	Daytime Mon - Fri 7am - 7pm	Evening and night-time Mon - Fri before 7am after 7pm	Weekend all day Sat and Sun	Minimum charge in pence
	O2 RRP pence per minute			
Message service - c	15.64	9.06	4.78	5.83
Personal numbering service - d	23.91	14.09	14.09	6.71
Personal numbering service - e	7.06	7.06	7.06	6.71
Personal numbering service - f	42.93	28.62	14.31	6.71
Mobile telephone - fm2	28.37	20.11	9.03	5.71
Mobile telephone - fm7	16.17	9.95	6.22	6.72
Mobile telephone - fm8	16.17	9.95	6.22	6.72
Mobile telephone - fm9	16.17	9.95	6.22	6.72
Mobile telephone - fm10	23.4	18.28	7.75	6.72
Mobile telephone - fm11	20.47	20.47	20.47	6.72
Mobile telephone - fm12	16.42	16.42	16.42	6.72
Mobile telephone - fm17	13.66	13.66	13.66	6.75
Fm13 - calls to mobile telephones (d)	20.89	17.76	9.92	6.72
Fm14 - calls to mobile telephones (d)	14.04	14.04	14.04	6.72
Fm15 - calls to mobile telephones (d)	15.23	15.23	15.23	6.72
Fm16 - calls to mobile telephones (d)	12.93	12.93	12.93	6.72
Wifi services - fw1	19.30	19.30	9.41	6.72
Wifi services - fw2	18.28	15.21	7.75	6.72
Wifi services - fw3	20.32	16.23	8.19	6.72
Wifi services - fw4	19.74	12.06	6.04	6.72
Wifi services - fw5	18.42	14.91	8.33	6.72
Wifi services - fw6	16.08	12.87	7.75	6.72
Wifi services - fw7 (HSD)	54.79	54.79	54.79	6.72
Wifi services - fw7	15.35	15.35	15.35	6.72
Wifi services - fw8 (HSD)	59.00	59.00	59.00	6.72
Wifi services - fw8	54.79	54.79	54.79	6.72
Wifi services - fw9	20.47	20.47	20.47	6.72
Wifi services - fw10	12.24	12.24	12.24	6.72
Wifi services - fw11	16.08	16.08	16.08	6.72
Wifi services - fw12	15.82	15.81	15.81	6.75

## UK minor calls continued

Calls charged by time duration				
Call type	Daytime Mon - Fri 7am - 7pm	Evening and night-time Mon - Fri before 7am after 7pm	Weekend all day Sat and Sun	Minimum charge in pence
O2 RRP pence per minute				
Internet service See Note 1	5.00 (Access Charge) + Service Charge	5.00 (Access Charge) + Service Charge	5.00 (Access Charge) + Service Charge	5.00 (Access Charge) + Service Charge

### Note 1

Calls to Internet Service numbers will also attract a Service Charge set by the Service Provider managing the number dialed.

Calls charged by time duration				
Call type	Daytime Mon - Fri 7am - 7pm	Evening and night-time Mon - Fri before 7am after 7pm	Weekend all day Sat and Sun	Minimum charge in pence
O2 RRP pence per minute				
Personal numbering service - j	49.50	33.59	16.20	7.20
Personal numbering service - k	57.50	38.50	19.20	7.20
Personal numbering service - m	63.00	43.50	43.50	7.20
Information service – n (See Note 1)	5.00 (Access Charge) + Service Charge	5.00 (Access Charge) + Service Charge	5.00 (Access Charge) + Service Charge	
Personal numbering service - pn1	34.35	22.90	11.45	6.71
Personal numbering service - pn2	71.56	71.56	71.56	6.71
Personal numbering service - pn3	70.13	55.82	55.82	6.71
Personal numbering service - pn4	37.21	37.21	37.21	6.71
Personal numbering service - pn5	24.33	24.33	24.33	6.72
Personal numbering service - pn6	28.62	28.62	28.62	6.72
Personal numbering service - pn7	59.81	4.91	1.24	1.24
Personal numbering service - pn8	28.59	28.59	28.59	6.72
Personal numbering service - pn9	33.63	33.63	33.63	6.72
Personal numbering service - pn10	50.09	50.09	50.09	6.72
Personal numbering service - pn11	55.82	41.51	41.51	6.72
Personal numbering service - pn12	38.64	38.64	38.64	6.72
Personal numbering service - pn13	55.82	55.82	55.82	6.72
Personal numbering service - pn14	42.22	42.22	42.22	6.72
Personal numbering service - pn15	18.60	18.60	18.60	7.73
Personal numbering service - pn16	20.03	20.03	20.03	7.73
Personal numbering service - pn17	21.47	21.47	21.47	7.73
Personal numbering service - pn18	22.90	22.90	22.90	7.73
Personal numbering service - pn19	14.31	14.31	14.31	7.73

Personal numbering service - pn20	34.35	34.35	34.35	7.73
Personal numbering service - pn21	58.86	58.86	58.86	7.73
Personal numbering service - pn22	14.77	9.50	8.04	7.73

Calls charged by time duration				
Call type	Daytime Mon - Fri 7am - 7pm	Evening and night-time Mon - Fri before 7am after 7pm	Weekend all day Sat and Sun	Minimum charge in pence
02 RRP pence per minute				
Premium rate service (See Note 1)	5.00 (Access Charge) + Service Charge	5.00 (Access Charge) + Service Charge	5.00 (Access Charge) + Service Charge	

**Note 1**

Calls to Information Service & Premium Rate numbers will also attract a Service Charge set by the Service Provider managing the number dialed.

Calls charged by time duration				
Call type	Daytime Mon - Fri 7am - 7pm	Evening and night-time Mon - Fri before 7am after 7pm	Weekend all day Sat and Sun	Minimum charge in pence
02 RRP pence per minute				
Paging service - r	9.84	4.91	3.67	3.86
INMARSAT - B (0087x3)	472.38	472.38	472.38	219.37
INMARSAT - B HSD duplex (0087x3914)	1181.70	1181.70	1181.70	219.37
INMARSAT - M (0087x6)	491.40	491.40	491.40	219.37
M4 high speed data (0087x60)	877.50	877.50	877.50	219.37
Mobiq (0087x76)	321.75	321.75	321.75	219.37
Skyphone (0087x5)	709.31	709.31	709.31	219.37
Emsat (0088213)	270.56	270.56	270.56	219.37
Thuraya_Iridium (0088167/0088216)	438.75	438.75	438.75	219.37
Navitas marine sat sys	111.88	111.88	111.88	219.37
Navitas telecom marine satellite system	107.41	107.41	107.41	210.60
NO Fee		0	0	0
Operator access		0	0	0

## UK minor calls continued

Fixed fee calls					
Call type	Fixed fee price in pence per call	Daytime Mon - Fri 7am - 7pm	Evening and night-time Mon - Fri before 7am after 7pm	Weekend all day Sat and Sun	Minimum charge in pence
O2 RRP pence per minute					
Timeline	39.50				39.50
Premium rate service See Note 1	Service dependent	5.00 (Access Charge) + Service Charge	5.00 (Access Charge) + Service Charge	5.00 (Access Charge) + Service Charge	+ Service Charge

### Note 1

Calls to Premium Rate numbers will also attract a Service Charge set by the Service Provider managing the number dialed.

Dialled direct, fixed fee and per minute charge					
Call type	Fixed fee price in pence per call	Daytime Mon - Fri 7am - 7pm	Evening and night-time Mon - Fri before 7am after 7pm	Weekend all day Sat and Sun	Minimum charge in pence
O2 RRP pence per minute					
Multimedia service (See Note 1)	Service dependent	5.00 (Access Charge) + Service Charge	5.00 (Access Charge) + Service Charge	5.00 (Access Charge) + Service Charge	

### Note 1

Calls to Multimedia Service numbers will also attract a Service Charge set by the Service Provider managing the number dialed.

## UK directory enquiry calls

Calls charged by time duration				
Call type	Fixed fee price in pence per call	Daytime Mon - Fri 7am - 7pm	Evening and night-time Mon - Fri before 7am after 7pm	Weekend all day Sat and Sun
O2 RRP pence per minute				
Directory enquiry 118 (See Note 1)	Service dependent	5.00 (Access Charge) + Service Charge	5.00 (Access Charge) + Service Charge	5.00 (Access Charge) + Service Charge

### Note 1

Calls to Directory Enquiries 118XXX numbers will also attract a Service Charge set by the Service Provider managing the number dialed.



## International calls from the UK

Call type	Daytime Mon - Fri 7am - 7pm	Evening and night-time Mon - Fri before 7am after 7pm	Weekend all day Sat and Sun	Minimum charge in pence
O2 RRP pence per minute				
Fixed rate for Belgium	3.23	3.23	3.23	see note 1
Mobile rate for Belgium	21.79	21.79	21.79	see note 1
Fixed rate for Canada	1.78	1.78	1.78	see note 1
Mobile rate for Canada	1.35	1.35	1.35	see note 1
Fixed rate for China	1.35	1.35	1.35	see note 1
Mobile rate for China	1.67	1.67	1.67	see note 1
Fixed rate for France	1.35	1.35	1.35	see note 1
Mobile rate for France	13.73	13.73	13.73	see note 1
Fixed rate for Germany	1.35	1.35	1.35	see note 1
Mobile rate for Germany	16.26	16.26	16.26	see note 1
Fixed rate for Hong Kong	2.09	2.09	2.09	see note 1
Mobile rate for Hong Kong	1.75	1.75	1.75	see note 1
Fixed rate for India	6.37	6.37	6.37	see note 1
Mobile rate for India	6.37	6.37	6.37	see note 1
Fixed rate for Republic of Ireland	1.35	1.35	1.35	see note 1
Mobile rate for Republic of Ireland	16.25	16.25	16.25	see note 1
Fixed rate for Italy	1.83	1.83	1.83	see note 1
Mobile rate for Italy	17.90	17.90	17.90	see note 1
Fixed rate for Japan	2.85	2.85	2.85	see note 1
Mobile rate for Japan	10.69	10.69	10.69	see note 1
Fixed rate for Netherlands	1.90	1.90	1.90	see note 1
Mobile rate for Netherlands	17.17	17.17	17.17	see note 1
Business Rate for Netherlands	1.87	1.87	1.87	see note 1
Fixed rate for Norway	1.75	1.75	1.75	see note 1
Mobile rate for Norway	22.49	22.49	22.49	see note 1
Fixed rate for Poland	1.68	1.68	1.68	see note 1
Mobile rate for Poland	7.45	7.45	7.45	see note 1
Fixed rate for Russia	4.07	4.24	4.24	see note 1
Mobile rate for Russia	5.31	5.31	5.31	see note 1

## International calls from the UK continued

Call type	Daytime Mon - Fri 7am - 7pm	Evening and night-time Mon - Fri before 7am after 7pm	Weekend all day Sat and Sun	Minimum charge in pence
O2 RRP pence per minute				
Fixed rate for Singapore	1.35	1.35	1.35	see note 1
Mobile rate for Singapore	1.35	1.35	1.35	see note 1
Fixed rate for Spain	1.35	1.35	1.35	see note 1
Mobile rate for Spain	15.47	15.47	15.47	see note 1
Fixed rate for Sweden	1.35	1.35	1.35	see note 1
Mobile rate for Sweden	15.29	15.29	15.29	see note 1
Fixed rate for Switzerland	1.83	1.83	1.83	see note 1
Mobile rate for Switzerland	21.84	21.84	21.84	see note 1
Fixed rate for Turkey	4.01	4.01	4.01	see note 1
Mobile rate for Turkey	12.98	12.98	12.98	see note 1
Fixed rate for USA	1.35	1.35	1.35	see note 1
Mobile rate for USA	1.35	1.35	1.35	see note 1
Fixed rate for Afghanistan	32.41	32.41	32.41	see note 1
Mobile rate for Afghanistan	32.88	32.88	32.88	see note 1
Fixed rate for Alaska	5.04	5.04	5.04	see note 1
Mobile rate for Alaska	5.04	5.04	5.04	see note 1
Fixed rate for Albania	14.85	14.85	14.85	see note 1
Mobile rate for Albania	44.01	44.01	44.01	see note 1
Fixed rate for Algeria	15.92	15.92	15.92	see note 1
Mobile rate for Algeria	27.06	27.06	27.06	see note 1
Fixed rate for Samoa (US)	12.96	12.96	12.96	see note 1
Mobile rate for Samoa (US)	41.5	41.5	41.5	see note 1
Fixed rate for Andorra	5.61	5.61	5.61	see note 1
Mobile rate for Andorra	33.01	33.01	33.01	see note 1
Fixed rate for Angola	18.43	18.43	18.43	see note 1
Mobile rate for Angola	25.42	25.42	25.42	see note 1
Fixed rate for Anguilla	28.85	28.85	28.85	see note 1
Mobile rate for Anguilla	32.95	32.95	32.95	see note 1
Fixed rate for Antarctica	139.58	139.58	139.58	see note 1
Mobile rate for Antarctica	139.58	139.58	139.58	see note 1

## International calls from the UK continued

Call type	Daytime Mon - Fri 7am - 7pm	Evening and night-time Mon - Fri before 7am after 7pm	Weekend all day Sat and Sun	Minimum charge in pence
O2 RRP pence per minute				
Fixed rate for Antigua and Barbuda	19.04	19.04	19.04	see note 1
Mobile rate for Antigua and Barbuda	18.75	18.75	18.75	see note 1
Fixed rate for Argentina	1.21	1.21	1.21	see note 1
Mobile rate for Argentina	30.37	30.37	30.37	see note 1
Fixed rate for Armenia	8.71	8.71	8.71	see note 1
Mobile rate for Armenia	28.77	28.77	28.77	see note 1
Fixed rate for Aruba	13.59	13.59	13.59	see note 1
Mobile rate for Aruba	32.19	32.19	32.19	see note 1
Fixed rate for Ascension Island	102.67	102.67	102.67	see note 1
Mobile rate for Ascension Island	102.67	102.67	102.67	see note 1
Fixed rate for Australia	2.41	2.41	2.41	see note 1
Mobile rate for Australia	23.52	23.52	23.52	see note 1
Fixed rate for Austria	5.90	5.90	5.90	see note 1
Mobile rate for Austria	22.88	22.88	22.88	see note 1
Fixed rate for Azerbaijan	15.15	15.15	15.15	see note 1
Mobile rate for Azerbaijan	25.37	25.37	25.37	see note 1
Fixed rate for Azores	3.40	3.40	3.40	see note 1
Mobile rate for Azores	20.88	20.88	20.88	see note 1
Fixed rate for Bahamas	9.00	9.00	9.00	see note 1
Mobile rate for Bahamas	17.3	17.3	17.3	see note 1
Fixed rate for Bahrain	9.14	9.14	9.14	see note 1
Mobile rate for Bahrain	12.19	12.19	12.19	see note 1
Fixed rate for Bangladesh	11.26	11.26	11.26	see note 1
Mobile rate for Bangladesh	7.39	7.39	7.39	see note 1
Fixed rate for Barbados	15.02	15.02	15.02	see note 1
Mobile rate for Barbados	32.60	32.60	32.60	see note 1
Fixed rate for Belarus	35.87	35.87	35.87	see note 1
Mobile rate for Belarus	31.49	31.49	31.49	see note 1
Fixed rate for Belize	31.78	31.78	31.78	see note 1
Mobile rate for Belize	31.78	31.78	31.78	see note 1

## International calls from the UK continued

Call type	Daytime Mon - Fri 7am - 7pm	Evening and night-time Mon - Fri before 7am after 7pm	Weekend all day Sat and Sun	Minimum charge in pence
O2 RRP pence per minute				
Fixed rate for Benin	18.05	18.05	18.05	see note 1
Mobile rate for Benin	18.71	18.71	18.71	see note 1
Fixed rate for Bermuda	6.84	6.84	6.84	see note 1
Mobile rate for Bermuda	6.84	6.84	6.84	see note 1
Fixed rate for Bhutan	16.25	16.25	16.25	see note 1
Mobile rate for Bhutan	19.72	19.72	19.72	see note 1
Fixed rate for Bolivia	13.56	13.56	13.56	see note 1
Mobile rate for Bolivia	14.24	14.24	14.24	see note 1
Fixed rate for Bosnia	18.93	18.93	18.93	see note 1
Mobile rate for Bosnia	43.36	43.36	43.36	see note 1
Fixed rate for Botswana	7.72	7.72	7.72	see note 1
Mobile rate for Botswana	21.52	21.52	21.52	see note 1
Fixed rate for Brazil	4.17	4.17	4.17	see note 1
Mobile rate for Brazil	34.99	34.99	34.99	see note 1
Fixed rate for Brunei Darussalam	4.10	4.10	4.10	see note 1
Mobile rate for Brunei Darussalam	4.57	4.57	4.57	see note 1
Fixed rate for Bulgaria	7.01	7.01	7.01	see note 1
Mobile rate for Bulgaria	57.10	57.10	57.10	see note 1
Fixed rate for Burkina Faso	33.38	33.38	33.38	see note 1
Mobile rate for Burkina Faso	39.36	39.36	39.36	see note 1
Fixed rate for Burundi	7.53	7.53	7.53	see note 1
Mobile rate for Burundi	19.98	19.98	19.98	see note 1
Fixed rate for Cambodia	20.49	20.49	20.49	see note 1
Mobile rate for Cambodia	20.49	20.49	20.49	see note 1
Fixed rate for Cameroon	21.67	21.67	21.67	see note 1
Mobile rate for Cameroon	32.78	32.78	32.78	see note 1
Fixed rate for Canary Islands	1.93	1.93	1.93	see note 1
Mobile rate for Canary Islands	20.63	20.63	20.63	see note 1
Fixed rate for Cape Verde	33.99	33.99	33.99	see note 1
Mobile rate for Cape Verde	33.99	33.99	33.99	see note 1

## International calls from the UK continued

Call type	Daytime Mon - Fri 7am - 7pm	Evening and night-time Mon - Fri before 7am after 7pm	Weekend all day Sat and Sun	Minimum charge in pence
O2 RRP pence per minute				
Fixed rate for Cayman Islands	13.97	13.97	13.97	see note 1
Mobile rate for Cayman Islands	24.96	24.96	24.96	see note 1
Fixed rate for Central African Republic	42.00	42.00	42.00	see note 1
Mobile rate for Central African Republic	42.00	42.00	42.00	see note 1
Fixed rate for Chad	21.49	21.49	21.49	see note 1
Mobile rate for Chad	21.37	21.37	21.37	see note 1
Fixed rate for Chatham Islands	3.80	3.80	3.80	see note 1
Mobile rate for Chatham Islands	22.67	22.67	22.67	see note 1
Fixed rate for Chile	21.55	21.55	21.55	see note 1
Mobile rate for Chile	32.15	32.15	32.15	see note 1
Fixed rate for Christmas Islands	2.83	2.83	2.83	see note 1
Mobile rate for Christmas Islands	2.83	2.83	2.83	see note 1
Fixed rate for Cocos Islands	2.83	2.83	2.83	see note 1
Mobile rate for Cocos Islands	9.26	9.26	9.26	see note 1
Fixed rate for Colombia	4.75	4.75	4.75	see note 1
Mobile rate for Colombia	12.19	12.19	12.19	see note 1
Fixed rate for Comoros	55.71	55.71	55.71	see note 1
Mobile rate for Comoros	64.97	64.97	64.97	see note 1
Fixed rate for Congo Dem Rep	120.95	120.95	120.95	see note 1
Mobile rate for Congo Dem Rep	34.05	34.05	34.05	see note 1
Fixed rate for Congo	56.80	56.80	56.80	see note 1
Mobile rate for Congo	35.01	35.01	35.01	see note 1
Fixed rate for Cook Islands	91.54	91.54	91.54	see note 1
Mobile rate for Cook Islands	91.54	91.54	91.54	see note 1
Fixed rate for Costa Rica	5.45	5.45	5.45	see note 1
Mobile rate for Costa Rica	9.86	9.86	9.86	see note 1
Fixed rate for Cote d'Ivoire	20.81	20.81	20.81	see note 1
Mobile rate for Cote d'Ivoire	25.18	25.18	25.18	see note 1
Fixed rate for Croatia	4.23	4.23	4.23	see note 1
Mobile rate for Croatia	33.92	33.92	33.92	see note 1

## International calls from the UK continued

Call type	Daytime Mon - Fri 7am - 7pm	Evening and night-time Mon - Fri before 7am after 7pm	Weekend all day Sat and Sun	Minimum charge in pence
O2 RRP pence per minute				
Fixed rate for Cuba	95.74	95.74	95.74	see note 1
Mobile rate for Cuba	95.88	95.88	95.88	see note 1
Fixed rate for Cyprus	2.84	2.84	2.84	see note 1
Mobile rate for Cyprus	4.29	4.29	4.29	see note 1
Fixed rate for Czech Republic	2.30	2.30	2.30	see note 1
Mobile rate for Czech Republic	22.93	22.93	22.93	see note 1
Fixed rate for Denmark	2.79	2.79	2.79	see note 1
Mobile rate for Denmark	22.98	22.98	22.98	see note 1
Fixed rate for Diego Garcia	154.00	154.00	154.00	see note 1
Mobile rate for Diego Garcia	154.00	154.00	154.00	see note 1
Fixed rate for Djibouti	49.36	49.36	49.36	see note 1
Mobile rate for Djibouti	51.52	51.52	51.52	see note 1
Fixed rate for Dominica	14.80	14.80	14.80	see note 1
Mobile rate for Dominica	33.63	33.63	33.63	see note 1
Fixed rate for Dominican Republic	8.05	8.05	8.05	see note 1
Mobile rate for Dominican Republic	14.78	14.78	14.78	see note 1
Fixed rate for East Timor	192.43	192.43	192.43	see note 1
Mobile rate for East Timor	192.43	192.43	192.43	see note 1
Fixed rate for Easter Island	3.07	3.07	3.07	see note 1
Mobile rate for Easter Island	26.23	26.23	26.23	see note 1
Fixed rate for Ecuador	26.63	26.63	26.63	see note 1
Mobile rate for Ecuador	30.94	30.94	30.94	see note 1
Fixed rate for Egypt	15.76	15.76	15.76	see note 1
Mobile rate for Egypt	17.66	17.66	17.66	see note 1
Fixed rate for El Salvador	29.02	29.02	29.02	see note 1
Mobile rate for El Salvador	23.13	23.13	23.13	see note 1
Fixed rate for Equatorial Guinea	36.25	36.25	36.25	see note 1
Mobile rate for Equatorial Guinea	36.25	36.25	36.25	see note 1
Fixed rate for Eritrea	37.05	37.05	37.05	see note 1
Mobile rate for Eritrea	37.05	37.05	37.05	see note 1

## International calls from the UK continued

Call type	Daytime Mon - Fri 7am - 7pm	Evening and night-time Mon - Fri before 7am after 7pm	Weekend all day Sat and Sun	Minimum charge in pence
O2 RRP pence per minute				
Fixed rate for Estonia	11.77	11.77	11.77	see note 1
Mobile rate for Estonia	38.78	38.78	38.78	see note 1
Fixed rate for Ethiopia	37.28	37.28	37.28	see note 1
Mobile rate for Ethiopia	37.95	37.95	37.95	see note 1
Fixed rate for Faroe Islands	30.85	30.85	30.85	see note 1
Mobile rate for Faroe Islands	22.41	22.41	22.41	see note 1
Fixed rate for Falkland Islands	59.33	59.33	59.33	see note 1
Mobile rate for Falkland Islands	55.14	55.14	55.14	see note 1
Fixed rate for Fiji	38.70	38.70	38.70	see note 1
Mobile rate for Fiji	37.53	37.53	37.53	see note 1
Fixed rate for Finland	4.50	4.50	4.50	see note 1
Mobile rate for Finland	17.35	17.35	17.35	see note 1
Fixed rate for French Guiana	13.28	13.28	13.28	see note 1
Mobile rate for French Guiana	49.74	49.74	49.74	see note 1
Fixed rate for French Polynesia	32.84	32.84	32.84	see note 1
Mobile rate for French Polynesia	32.84	32.84	32.84	see note 1
Fixed rate for Gabon	30.00	30.00	30.00	see note 1
Mobile rate for Gabon	29.67	29.67	29.67	see note 1
Fixed rate for Gambia	38.97	38.97	38.97	see note 1
Mobile rate for Gambia	38.97	38.97	38.97	see note 1
Fixed rate for Georgia	7.76	7.76	7.76	see note 1
Mobile rate for Georgia	18.01	18.01	18.01	see note 1
Fixed rate for Ghana	27.41	27.41	27.41	see note 1
Mobile rate for Ghana	23.51	23.51	23.51	see note 1
Fixed rate for Gibraltar	3.17	3.17	3.17	see note 1
Mobile rate for Gibraltar	36.65	36.65	36.65	see note 1
Fixed rate for Greece	1.58	1.58	1.58	see note 1
Mobile rate for Greece	24.44	24.44	24.44	see note 1
Fixed rate for Greenland	55.93	55.93	55.93	see note 1
Mobile rate for Greenland	79.61	79.61	79.61	see note 1

## International calls from the UK continued

Call type	Daytime Mon - Fri 7am - 7pm	Evening and night-time Mon - Fri before 7am after 7pm	Weekend all day Sat and Sun	Minimum charge in pence
O2 RRP pence per minute				
Fixed rate for Grenada	17.60	17.60	17.60	see note 1
Mobile rate for Grenada	33.72	33.72	33.72	see note 1
Fixed rate for Guadeloupe	6.41	6.41	6.41	see note 1
Mobile rate for Guadeloupe	41.87	41.87	41.87	see note 1
Fixed rate for Guam	7.23	7.23	7.23	see note 1
Mobile rate for Guam	6.63	6.63	6.63	see note 1
Fixed rate for Guatemala	16.35	16.35	16.35	see note 1
Mobile rate for Guatemala	20.50	20.50	20.50	see note 1
Fixed rate for Guinea	27.75	27.75	27.75	see note 1
Mobile rate for Guinea	34.98	34.98	34.98	see note 1
Fixed rate for Guinea-Bissau	80.79	80.79	80.79	see note 1
Mobile rate for Guinea Bissau	73.91	73.91	73.91	see note 1
Fixed rate for Guyana	37.80	37.80	37.80	see note 1
Mobile rate for Guyana	37.80	37.80	37.80	see note 1
Fixed rate for Haiti	39.20	39.20	39.20	see note 1
Mobile rate for Haiti	34.90	34.90	34.90	see note 1
Fixed rate for Hawaii	1.19	1.19	1.19	see note 1
Mobile rate for Hawaii	1.19	1.19	1.19	see note 1
Fixed rate for Honduras	34.77	34.77	34.77	see note 1
Mobile rate for Honduras	35.18	35.18	35.18	see note 1
Fixed rate for Hungary	2.66	2.66	2.66	see note 1
Mobile rate for Hungary	27.29	27.29	27.29	see note 1
Fixed rate for Iceland	2.09	2.09	2.09	see note 1
Mobile rate for Iceland	20.92	20.92	20.92	see note 1
Fixed rate for Indonesia	10.77	10.77	10.77	see note 1
Mobile rate for Indonesia	9.82	9.82	9.82	see note 1
Fixed rate for Iran	14.31	14.31	14.31	see note 1
Mobile rate for Iran	28.54	28.54	28.54	see note 1
Fixed rate for Iraq	13.81	13.81	13.81	see note 1
Mobile rate for Iraq	18.46	18.46	18.46	see note 1



## International calls from the UK continued

Call type	Daytime Mon - Fri 7am - 7pm	Evening and night-time Mon - Fri before 7am after 7pm	Weekend all day Sat and Sun	Minimum charge in pence
O2 RRP pence per minute				
Fixed rate for Israel	2.90	2.90	2.90	see note 1
Mobile rate for Israel	13.93	13.93	13.93	see note 1
Fixed rate for Jamaica	12.29	12.29	12.29	see note 1
Mobile rate for Jamaica	33.64	33.64	33.64	see note 1
Fixed rate for Jordan	12.82	12.82	12.82	see note 1
Mobile rate for Jordan	17.10	17.10	17.10	see note 1
Fixed rate for Kazakhstan	12.32	12.32	12.32	see note 1
Mobile rate for Kazakhstan	31.13	31.13	31.13	see note 1
Fixed rate for Kenya	13.62	13.62	13.62	see note 1
Mobile rate for Kenya	23.37	23.37	23.37	see note 1
Fixed rate for Kiribati	76.54	76.54	76.54	see note 1
Mobile rate for Kiribati	76.54	76.54	76.54	see note 1
Fixed rate for Khabarovska	101.53	101.53	101.53	see note 1
Mobile rate for Khabarovska	101.53	101.53	101.53	see note 1
Fixed rate for Korea North	100.51	100.51	100.51	see note 1
Mobile rate for Korea North	79.36	79.36	79.36	see note 1
Fixed rate for Korea South	1.77	1.77	1.77	see note 1
Mobile rate for Korea South	4.03	4.03	4.03	see note 1
Fixed rate for Kuwait	14.30	14.30	14.30	see note 1
Mobile rate for Kuwait	27.67	27.67	27.67	see note 1
Fixed rate for Kyrgyzstan	10.94	10.94	10.94	see note 1
Mobile rate for Kyrgyzstan	19.45	19.45	19.45	see note 1
Fixed rate for Laos	10.63	10.63	10.63	see note 1
Mobile rate for Laos	10.63	10.63	10.63	see note 1
Fixed rate for Latvia	5.84	5.84	5.84	see note 1
Mobile rate for Latvia	25.21	25.21	25.21	see note 1
Fixed rate for Lebanon	26.68	26.68	26.68	see note 1
Mobile rate for Lebanon	37.80	37.80	37.80	see note 1
Fixed rate for Lesotho	22.86	22.86	22.86	see note 1
Mobile rate for Lesotho	30.04	30.04	30.04	see note 1

## International calls from the UK continued

Call type	Daytime Mon - Fri 7am - 7pm	Evening and night-time Mon - Fri before 7am after 7pm	Weekend all day Sat and Sun	Minimum charge in pence
O2 RRP pence per minute				
Fixed rate for Liberia	30.90	30.90	30.90	see note 1
Mobile rate for Liberia	24.84	24.84	24.84	see note 1
Fixed rate for Libya	32.78	32.78	32.78	see note 1
Mobile rate for Libya	31.51	31.51	31.51	see note 1
Fixed rate for Liechtenstein	32.36	32.36	32.36	see note 1
Mobile rate for Liechtenstein	68.96	68.96	68.96	see note 1
Fixed rate for Lithuania	7.07	7.07	7.07	see note 1
Mobile rate for Lithuania	23.58	23.58	23.58	see note 1
Fixed rate for Luxembourg	1.43	1.43	1.43	see note 1
Mobile rate for Luxembourg	24.93	24.93	24.93	see note 1
Fixed rate for Macau	10.21	10.21	10.21	see note 1
Mobile rate for Macau	9.86	9.86	9.86	see note 1
Fixed rate for Macedonia	12.82	12.82	12.82	see note 1
Mobile rate for Macedonia	41.99	41.99	41.99	see note 1
Fixed rate for Madagascar	33.00	33.00	33.00	see note 1
Mobile rate for Madagascar	47.50	47.50	47.50	see note 1
Fixed rate for Madeira	1.93	1.93	1.93	see note 1
Mobile rate for Madeira	20.63	20.63	20.63	see note 1
Fixed rate for Malawi	10.48	10.48	10.48	see note 1
Mobile rate for Malawi	17.23	17.23	17.23	see note 1
Fixed rate for Malaysia	1.76	1.76	1.76	see note 1
Mobile rate for Malaysia	5.84	5.84	5.84	see note 1
Fixed rate for Maldives	45.93	45.93	45.93	see note 1
Mobile rate for Maldives	47.73	47.73	47.73	see note 1
Fixed rate for Mali	20.12	20.12	20.12	see note 1
Mobile rate for Mali	28.13	28.13	28.13	see note 1
Fixed rate for Malta	9.95	9.95	9.95	see note 1
Mobile rate for Malta	33.71	33.71	33.71	see note 1
Fixed rate for Marshall Islands	36.51	36.51	36.51	see note 1
Mobile rate for Marshall Islands	41.75	41.75	41.75	see note 1

## International calls from the UK continued

Call type	Daytime Mon - Fri 7am - 7pm	Evening and night-time Mon - Fri before 7am after 7pm	Weekend all day Sat and Sun	Minimum charge in pence
O2 RRP pence per minute				
Fixed rate for Martinique	9.57	9.57	9.57	see note 1
Mobile rate for Martinique	42.77	42.77	42.77	see note 1
Fixed rate for Mauritania	29.30	29.30	29.30	see note 1
Mobile rate for Mauritania	35.25	35.25	35.25	see note 1
Fixed rate for Mauritius	13.30	13.30	13.30	see note 1
Mobile rate for Mauritius	13.30	13.30	13.30	see note 1
Fixed rate for Mayotte Island	25.58	25.58	25.58	see note 1
Mobile rate for Mayotte Island	46.50	46.50	46.50	see note 1
Fixed rate for Mexico	5.84	5.84	5.84	see note 1
Mobile rate for Mexico	41.58	41.58	41.58	see note 1
Fixed rate for Micronesia	31.57	31.57	31.57	see note 1
Mobile rate for Micronesia	28.65	28.65	28.65	see note 1
Fixed rate for Moldova	20.30	20.30	20.30	see note 1
Mobile rate for Moldova	26.46	26.46	26.46	see note 1
Fixed rate for Monaco	4.74	4.74	4.74	see note 1
Mobile rate for Monaco	45.95	45.95	45.95	see note 1
Fixed rate for Mongolia	11.21	11.21	11.21	see note 1
Mobile rate for Mongolia	11.08	11.08	11.08	see note 1
Fixed rate for Montenegro	15.51	15.51	15.51	see note 1
Mobile rate for Montenegro	34.31	34.31	34.31	see note 1
Fixed rate for Montserrat	21.30	21.30	21.30	see note 1
Mobile rate for Montserrat	21.30	21.30	21.30	see note 1
Fixed rate for Morocco	19.23	19.23	19.23	see note 1
Mobile rate for Morocco	32.66	32.66	32.66	see note 1
Fixed rate for Mozambique	10.40	10.40	10.40	see note 1
Mobile rate for Mozambique	13.55	13.55	13.55	see note 1
Fixed rate for Myanmar	45.92	45.92	45.92	see note 1
Mobile rate for Myanmar	45.92	45.92	45.92	see note 1
Fixed rate for Nokhodka	85.80	85.80	85.80	see note 1
Mobile rate for Nokhodka	85.80	85.80	85.80	see note 1

## International calls from the UK continued

Call type	Daytime Mon - Fri 7am - 7pm	Evening and night-time Mon - Fri before 7am after 7pm	Weekend all day Sat and Sun	Minimum charge in pence
O2 RRP pence per minute				
Fixed rate for Namibia	11.26	11.26	11.26	see note 1
Mobile rate for Namibia	29.65	29.65	29.65	see note 1
Fixed rate for Nauru	128.84	128.84	128.84	see note 1
Mobile rate for Nauru	128.84	128.84	128.84	see note 1
Fixed rate for Navitas	258.54	258.54	258.54	see note 1
Mobile rate for Navitas	258.54	258.54	258.54	see note 1
Fixed rate for Nepal	62.95	62.95	62.95	see note 1
Mobile rate for Nepal	71.41	71.41	71.41	see note 1
Fixed rate for Netherlands Antilles	24	24	24	see note 1
Mobile rate for Netherlands Antilles	24.09	24.09	24.09	see note 1
Fixed rate for New Caledonia	35.01	35.01	35.01	see note 1
Mobile rate for New Caledonia	35.01	35.01	35.01	see note 1
Fixed rate for New Zealand	2.08	2.08	2.08	see note 1
Mobile rate for New Zealand	36.41	36.41	36.41	see note 1
Fixed rate for Nicaragua	30.91	30.91	30.91	see note 1
Mobile rate for Nicaragua	35.34	35.34	35.34	see note 1
Fixed rate for Niger	66.00	66.00	66.00	see note 1
Mobile rate for Niger	18.47	18.47	18.47	see note 1
Fixed rate for Nigeria	14.06	14.06	14.06	see note 1
Mobile rate for Nigeria	20.36	20.36	20.36	see note 1
Fixed rate for Niue	97.51	97.51	97.51	see note 1
Mobile rate for Niue	97.51	97.51	97.51	see note 1
Fixed rate for Norfolk Island	117.85	117.85	117.85	see note 1
Mobile rate for Norfolk Island	99.76	99.76	99.76	see note 1
Fixed rate for Northern Marianas	8.52	8.52	8.52	see note 1
Mobile rate for Northern Marianas	8.52	8.52	8.52	see note 1
Fixed rate for Oman	19.23	19.23	19.23	see note 1
Mobile rate for Oman	23.65	23.65	23.65	see note 1
Fixed rate for Pakistan	13.63	13.63	13.63	see note 1
Mobile rate for Pakistan	13.63	13.63	13.63	see note 1

## International calls from the UK continued

Call type	Daytime Mon - Fri 7am - 7pm	Evening and night-time Mon - Fri before 7am after 7pm	Weekend all day Sat and Sun	Minimum charge in pence
O2 RRP pence per minute				
Fixed rate for Palau	50.38	50.38	50.38	see note 1
Mobile rate for Palau	50.38	50.38	50.38	see note 1
Fixed rate for Palestine	30.23	30.23	30.23	see note 1
Mobile rate for Palestine	31	31	31	see note 1
Fixed rate for Panama	6.46	6.46	6.46	see note 1
Mobile rate for Panama	14.94	14.94	14.94	see note 1
Fixed rate for Papua New Guinea	94.77	94.77	94.77	see note 1
Mobile rate for Papua New Guinea	90.89	90.89	90.89	see note 1
Fixed rate for Paraguay	7.84	7.84	7.84	see note 1
Mobile rate for Paraguay	23.89	23.89	23.89	see note 1
Fixed rate for Peru	6.20	6.20	6.20	see note 1
Mobile rate for Peru	28.22	28.22	28.22	see note 1
Fixed rate for Philippines	19.09	19.09	19.09	see note 1
Mobile rate for Philippines	22.69	22.69	22.69	see note 1
Fixed rate for Portugal	3.40	3.40	3.40	see note 1
Mobile rate for Portugal	24.70	24.70	24.70	see note 1
Fixed rate for Puerto Rico	3.47	3.47	3.47	see note 1
Mobile rate for Puerto Rico	3.47	3.47	3.47	see note 1
Fixed rate for Qatar	22.56	22.56	22.56	see note 1
Mobile rate for Qatar	27.47	27.47	27.47	see note 1
Fixed rate for Reunion	23.29	23.29	23.29	see note 1
Mobile rate for Reunion	40.20	40.20	40.20	see note 1
Fixed rate for Rodriguez Island	48	48	48	see note 1
Mobile rate for Rodriguez Island	48	48	48	see note 1
Fixed rate for Romania	9.33	9.33	9.33	see note 1
Mobile rate for Romania	37.11	37.11	37.11	see note 1
Fixed rate for Ross Island	2.08	2.08	2.08	see note 1
Mobile rate for Ross Island	36.41	36.41	36.41	see note 1
Fixed rate for Rwanda	21.30	21.30	21.30	see note 1
Mobile rate for Rwanda	17.57	17.57	17.57	see note 1

## International calls from the UK continued

Call type	Daytime Mon - Fri 7am - 7pm	Evening and night-time Mon - Fri before 7am after 7pm	Weekend all day Sat and Sun	Minimum charge in pence
O2 RRP pence per minute				
Fixed rate for Samoa West	36.41	36.41	36.41	see note 1
Mobile rate for Samoa West	53.52	53.52	53.52	see note 1
Fixed rate for San Marino	60.72	60.72	60.72	see note 1
Mobile rate for San Marino	32.45	32.45	32.45	see note 1
Fixed rate for Sao Tome and Principe	166.47	166.47	166.47	see note 1
Mobile rate for Sao Tome and Principe	166.47	166.47	166.47	see note 1
Fixed rate for Saudi Arabia	18.30	18.30	18.30	see note 1
Mobile rate for Saudi Arabia	21.38	21.38	21.38	see note 1
Fixed rate for Senegal	29.00	29.00	29.00	see note 1
Mobile rate for Senegal	27.71	27.71	27.71	see note 1
Fixed rate for Serbia	9.01	9.01	9.01	see note 1
Mobile rate for Serbia	36.24	36.24	36.24	see note 1
Fixed rate for Seychelles	23.00	23.00	23.00	see note 1
Mobile rate for Seychelles	23.00	23.00	23.00	see note 1
Fixed rate for Sierra Leone	28.44	28.44	28.44	see note 1
Mobile rate for Sierra Leone	33.02	33.02	33.02	see note 1
Fixed rate for Slovakia	5.02	5.02	5.02	see note 1
Mobile rate for Slovakia	26.93	26.93	26.93	see note 1
Fixed rate for Slovenia	10.85	10.85	10.85	see note 1
Mobile rate for Slovenia	50.12	50.12	50.12	see note 1
Fixed rate for Solomon Islands	128.30	128.30	128.30	see note 1
Mobile rate for Solomon Islands	128.30	128.30	128.30	see note 1
Fixed rate for Somalia	66.09	66.09	66.09	see note 1
Mobile rate for Somalia	66.09	66.09	66.09	see note 1
Fixed rate for South Africa	5.18	5.18	5.18	see note 1
Mobile rate for South Africa	29.67	29.67	29.67	see note 1
Fixed rate for Sri Lanka	15.19	15.19	15.19	see note 1
Mobile rate for Sri Lanka	18.70	18.70	18.70	see note 1
Fixed rate for St Helena	118.73	118.73	118.73	see note 1
Mobile rate for St Helena	118.73	118.73	118.73	see note 1

## International calls from the UK continued

Call type	Daytime Mon - Fri 7am - 7pm	Evening and night-time Mon - Fri before 7am after 7pm	Weekend all day Sat and Sun	Minimum charge in pence
o2 RRP pence per minute				
Fixed rate for St Kitts and Nevis	17.51	17.51	17.51	see note 1
Mobile rate for St Kitts and Nevis	34.26	34.26	34.26	see note 1
Fixed rate for St Lucia	14.48	14.48	14.48	see note 1
Mobile rate for St Lucia	34.04	34.04	34.04	see note 1
Fixed rate for St Pierre and Miquelon	37.56	37.56	37.56	see note 1
Mobile rate for St Pierre and Miquelon	40.30	40.30	40.30	see note 1
Fixed rate for St Vincent	17.54	17.54	17.54	see note 1
Mobile rate for St Vincent	31.78	31.78	31.78	see note 1
Fixed rate for Sudan	15.94	15.94	15.94	see note 1
Mobile rate for Sudan	15.94	15.94	15.94	see note 1
Fixed rate for Suriname	29.39	29.39	29.39	see note 1
Mobile rate for Suriname	29.42	29.42	29.42	see note 1
Fixed rate for Swaziland	7.83	7.83	7.83	see note 1
Mobile rate for Swaziland	16.21	16.21	16.21	see note 1
Fixed rate for Syria	20.44	20.44	20.44	see note 1
Mobile rate for Syria	25.45	25.45	25.45	see note 1
Fixed rate for Taiwan	1.57	1.57	1.57	see note 1
Mobile rate for Taiwan	14.81	14.81	14.81	see note 1
Fixed rate for Tajikistan	15.91	15.91	15.91	see note 1
Mobile rate for Tajikistan	14.32	14.32	14.32	see note 1
Fixed rate for Tanzania	15.29	15.29	15.29	see note 1
Mobile rate for Tanzania	16.44	16.44	16.44	see note 1
Fixed rate for Thailand	3.44	3.44	3.44	see note 1
Mobile rate for Thailand	12.96	12.96	12.96	see note 1
Fixed rate for Togo	30.79	30.79	30.79	see note 1
Mobile rate for Togo	33.87	33.87	33.87	see note 1
Fixed rate for Tokelau	106.53	106.53	106.53	see note 1
Mobile rate for Tokelau	106.53	106.53	106.53	see note 1
Fixed rate for Tonga	33.60	33.60	33.60	see note 1
Mobile rate for Tonga	33.60	33.60	33.60	see note 1

## International calls from the UK continued

Call type	Daytime Mon - Fri 7am - 7pm	Evening and night-time Mon - Fri before 7am after 7pm	Weekend all day Sat and Sun	Minimum charge in pence
O2 RRP pence per minute				
Fixed rate for Trinidad and Tobago	10.55	10.55	10.55	see note 1
Mobile rate for Trinidad and Tobago	17.09	17.09	17.09	see note 1
Fixed rate for Tunisia	32.00	32.00	32.00	see note 1
Mobile rate for Tunisia	37.14	37.14	37.14	see note 1
Fixed rate for Turkmenistan	16.94	16.94	16.94	see note 1
Mobile rate for Turkmenistan	16.94	16.94	16.94	see note 1
Fixed rate for Turks and Caicos Islands	14.83	14.83	14.83	see note 1
Mobile rate for Turks and Caicos Islands	32.80	32.80	32.80	see note 1
Fixed rate for Tuvalu	69.92	69.92	69.92	see note 1
Mobile rate for Tuvalu	69.92	69.92	69.92	see note 1
Fixed rate for Uganda	17.17	17.17	17.17	see note 1
Mobile rate for Uganda	18.14	18.14	18.14	see note 1
Fixed rate for Ukraine	14.96	14.96	14.96	see note 1
Mobile rate for Ukraine	20.20	20.20	20.20	see note 1
Fixed rate for United Arab Emirates	23.83	23.83	23.83	see note 1
Mobile rate for United Arab Emirates	23.83	23.83	23.83	see note 1
Fixed rate for Uruguay	7.83	7.83	7.83	see note 1
Mobile rate for Uruguay	27.38	27.38	27.38	see note 1
Fixed rate for Uzbekistan	7.96	7.96	7.96	see note 1
Mobile rate for Uzbekistan	28.57	28.57	28.57	see note 1
Fixed rate for Vanuatu	70.57	70.57	70.57	see note 1
Mobile rate for Vanuatu	69.69	69.69	69.69	see note 1
Fixed rate for Vatican City (Italy)	1.78	1.78	1.78	see note 1
Mobile rate for Vatican City (Italy)	1.78	1.78	1.78	see note 1
Fixed rate for Venezuela	8.33	8.33	8.33	see note 1
Mobile rate for Venezuela	29.31	29.31	29.31	see note 1
Fixed rate for Vietnam	14.74	14.74	14.74	see note 1
Mobile rate for Vietnam	14.06	14.06	14.06	see note 1
Fixed rate for Virgin Islands UK	21.68	21.68	21.68	see note 1
Mobile rate for Virgin Islands UK	27.96	27.96	27.96	see note 1



## International calls from the UK continued

Call type	Daytime Mon - Fri 7am - 7pm	Evening and night-time Mon - Fri before 7am after 7pm	Weekend all day Sat and Sun	Minimum charge in pence
O2 RRP pence per minute				
Fixed rate for Virgin Islands US	3.55	3.55	3.55	see note 1
Mobile rate for Virgin Islands US	3.55	3.55	3.55	see note 1
Fixed rate for Wallis and Futuna Islands	67.00	67.00	67.00	see note 1
Mobile rate for Wallis and Futuna Islands	67.00	67.00	67.00	see note 1
Fixed rate for Yemen	22.36	22.36	22.36	see note 1
Mobile rate for Yemen	23.33	23.33	23.33	see note 1
Fixed rate for Zambia	5.40	5.40	5.40	see note 1
Mobile rate for Zambia	22.74	22.74	22.74	see note 1
Fixed rate for Zimbabwe	11.72	11.72	11.72	see note 1
Mobile rate for Zimbabwe	35.81	35.81	35.81	see note 1

### Note 1

Billing for standard calls is per second rounded down to the nearest tenth of a penny. If the cost of a call is less than 0.1p, we will round down to zero pence.

### General note

Where prices appear in the minimum charge columns as well as the pence per minute columns, then both apply for the call duration. Some calls such as DQ and premium rate do have fixed rate charging with a minimum price.

## UK texts

Text type	O2 RRP pence per text
Text originated from a UK fixed line and delivered to a UK fixed line	3.60
Text originated from a UK fixed line and delivered to a UK mobile customer	6.48

